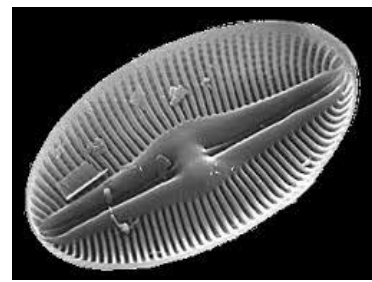
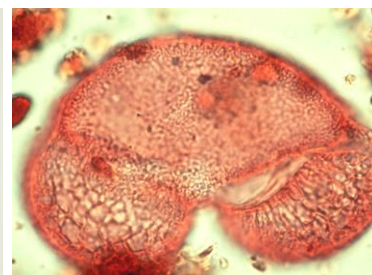
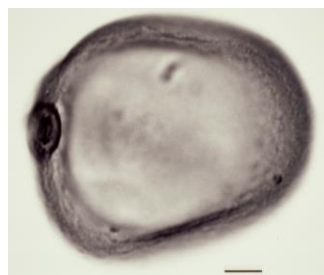
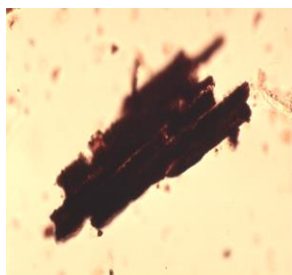


Geography 530: Pollen and Other Microfossils in Quaternary Research

Wednesdays 2:30–5:00 in Spring 2014



This course will focus on pollen grains and other microfossils in Quaternary sediments as proxy indicators of past vegetation, climate, and disturbance regimes. The format will consist of a combination of lectures, laboratory work, discussion, presentations, and field experiences. We will meet Wednesdays from 2:30 to 5:00 in the Advanced Physical Geography Teaching Lab (401 Burchfiel), and at selected other times and places to be arranged. The course textbook is available digitally (free to you!) from the UT library.

Geography 530 is designed to serve the needs of graduate students in geography, anthropology, earth and planetary sciences, and ecology, and will include some opportunity for independent research related to ongoing or planned thesis/dissertation work. Advanced undergraduates may also find the course interesting and useful and are welcome with the permission of the instructor. Please contact the instructor, Dr. Sally Horn (shorn@utk.edu), if you have questions. **Join us Spring 2014 to learn the secrets hiding in mud!**